



UC

English

Français

YIT-W10

Wireless transmitter for iPod
Transmetteur sans fil pour iPod

OWNER'S MANUAL

MODE D'EMPLOI



FCC INFORMATION (for US customers)

- IMPORTANT NOTICE: DO NOT MODIFY THIS UNIT!**
This product, when installed as indicated in the instructions contained in this manual, meets FCC requirements. Modifications not expressly approved by Yamaha may void your authority, granted by the FCC, to use the product.
- IMPORTANT:**
When connecting this product to accessories and/or another product use only high quality shielded cables. Cable/s supplied with this product **MUST** be used. Follow all installation instructions. Failure to follow instructions could void your FCC authorization to use this product in the USA.
- NOTE:**
This product has been tested and found to comply with the requirements listed in FCC Regulations, Part 15 for Class "B" digital devices. Compliance with these requirements provides a reasonable level of assurance that your use of this product in a residential environment will not result in harmful interference with other electronic devices. This equipment generates/uses radio frequencies and, if not installed and used according to the instructions found in the users manual, may cause interference harmful to the operation of other electronic devices.

Compliance with FCC regulations does not guarantee that interference will not occur in all installations. If this product is found to be the source of interference, which can be determined by turning the unit "OFF" and "ON", please try to eliminate the problem by using one of the following measures:

Relocate either this product or the device that is being affected by the interference.
Utilize power outlets that are on different branch (circuit breaker or fuse) circuits or install AC line filter/s.
In the case of radio or TV interference, relocate/reorient the antenna. If the antenna lead-in is 300 ohm ribbon lead, change the lead-in to coaxial type cable.
If these corrective measures do not produce satisfactory results, please contact the local retailer authorized to distribute this type of product. If you can not locate the appropriate retailer, please contact Yamaha Electronics Corp., U.S.A. 6660 Orangethorpe Ave, Buena Park, CA 90620.
The above statements apply **ONLY** to those products distributed by Yamaha Corporation of America or its subsidiaries.

This device complies with Part 15 of the FCC Rules.

Operation is subject to the following two conditions:

- 1) this device may not cause harmful interference, and
 - 2) this device must accept any interference received including interference that may cause undesired operation.
- See user manual instructions if interference to radio reception is suspected.

This equipment complies with FCC/IC radiation exposure limits set forth for uncontrolled equipment and meets the FCC radio frequency (RF) Exposure Guidelines in Supplement C to OET65 and RSS-102 of the IC radio frequency (RF) Exposure rules. This equipment has very low levels of RF energy that it deemed to comply without maximum permissive exposure evaluation (MPE). But it is desirable that it should be installed and operated with at least 20 cm and more between the radiator and person's body (excluding extremities: hands, wrists, feet and ankles).

NOTICE

This equipment has been tested and found to comply with the limits for a Class B digital device, pursuant to part 15 of the FCC Rules. These limits are designed to provide reasonable protection against harmful interference in a residential installation.

This equipment generates, uses and can radiate radio frequency energy and, if not installed and used in accordance with the instructions, may cause harmful interference to radio communications. However, there is no guarantee that interference will not occur in a particular installation. If this equipment does cause harmful interference to radio or television reception, which can be determined by turning the equipment off and on, the user is encouraged to try to correct the interference by one or more of the following measures:

- Reorient or relocate the receiving antenna
- Increase the separation between the equipment and receiver.
- Connect the equipment into an outlet on a circuit different from that to which the receiver is connected.
- Consult the dealer or an experienced radio/TV technician for help.

FCC WARNING

Change or modifications not expressly approved by the party responsible for compliance could void the user's authority to operate the equipment.

FOR CANADIAN CUSTOMERS

To prevent electric shock, match wide blade of plug to wide slot and fully insert.
This Class B digital apparatus complies with Canadian ICES-003.

Caution: Read this before operating this unit.

- 1 To assure the finest performance, please read this manual carefully. Keep it in a safe place for future reference.
- 2 Locate this unit away from other electrical appliances, motors, or transformers to avoid humming sounds.
- 3 Do not expose this unit to sudden temperature changes from cold to hot, and do not locate this unit in an environment with high humidity (i.e. a room with a humidifier) to prevent condensation inside this unit, which may cause an electrical shock, fire, damage to this unit, and/or personal injury.
- 4 Avoid installing this unit where foreign object may fall onto this unit and/or this unit may be exposed to liquid dripping or splashing. On the top of this unit, do not place:
 - Other components, as they may cause damage and/or discoloration on the surface of this unit.
 - Burning objects (i.e. candles), as they may cause fire, damage to this unit, and/or personal injury.
 - Containers with liquid in them, as they may fall and liquid may cause electrical shock to the user and/or damage to this unit.
- 5 Do not cover this unit with a newspaper, tablecloth, curtain, etc. in order not to obstruct heat radiation. If the temperature inside this unit rises, it may cause fire, damage to this unit, and/or personal injury.
- 6 Do not plug in this unit to a wall outlet until all connections are complete.
- 7 Do not use force on switches, knobs and/or cords.
- 8 When disconnecting the power cable/AC adapter from the wall outlet, grasp the plug; do not pull the cable.
- 9 Do not clean this unit with chemical solvents; this might damage the finish. Use a clean, dry cloth.
- 10 Only voltage specified on this unit must be used. Using this unit with a higher voltage than specified is dangerous and may cause fire, damage to this unit, and/or personal injury. Yamaha will not be held responsible for any damage resulting from use of this unit with a voltage other than specified.
- 11 Do not attempt to modify or fix this unit. Contact qualified Yamaha service personnel when any service is needed. The cabinet should never be opened for any reasons.
- 12 When not planning to use this unit for long periods of time (i.e. vacation), disconnect the AC power plug from the wall outlet.
- 13 Be sure to read the "Troubleshooting" section on common operating errors before concluding that this unit is faulty.
- 14 Before moving this unit, turn off this unit, and disconnect the AC power plug from the wall outlet.
- 15 Condensation will form when the surrounding temperature changes suddenly. Disconnect the power cable from the outlet, then leave this unit alone.
- 16 When using this unit for a long time, this unit may become warm. Turn the power off, then leave this unit alone for cooling.
- 17 Install this unit near the AC outlet and where the AC power plug can be reached easily.
- 18 Be sure to use the AC adaptors supplied with this unit. Using an AC adaptor other than those provided may cause fire or damage to this unit.

WARNING

TO REDUCE THE RISK OF FIRE OR ELECTRIC SHOCK, DO NOT EXPOSE THIS UNIT TO RAIN OR MOISTURE.

CAUTION

Use of controls or adjustments or performance of procedures other than those specified herein may result in hazardous radiation exposure.

Radio waves may affect electro-medical devices. Do not use this unit near medical devices or inside medical facilities.

Do not use this unit within 22 cm (9 inches) of persons with a heart pacemaker implant or defibrillator implant.

Even if an iPod or iPhone is not connected to this unit, this unit is not disconnected from the AC power source as long as it is connected to the AC wall outlet. In this state, this unit is designed to consume a very small quantity of power.

Be sure to use this product only in the country in where it was purchased.

This transmitter must not be co-located or operated in conjunction with any other antenna or transmitter.

IMPORTANT

Please record the serial number of this unit in the space below.
MODEL:
Serial No.:
The serial number is located on the rear of the unit. Retain this Owner's Manual in a safe place for future reference.

■ Introduction

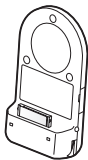
YIT-W10 is a wireless transmitter designed for iPod or iPhone series. YIT-W10 employs the Yamaha “yAired” technology to establish a wireless connection with another Yamaha product that supports “yAired” and enables playback of the iPod or iPhone on your Yamaha product.

Also the charging cradle can be used for charging the iPod or iPhone, or to play music or movies for an extended time.

■ Included items

YIT-W10 consists of a transmitter PDX-50TX, a charging cradle PDX-50BC, and an AC adapter. Check that you have received all of the following included items.

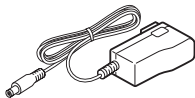
Wireless transmitter for iPod x1 (PDX-50TX)



Charging cradle x1 (PDX-50BC)



AC adapter x1 (MU12-2050100-A1)

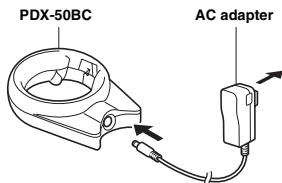


OWNER'S MANUAL

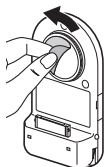


■ Using YIT-W10

- 1 Connect the AC adapter to PDX-50BC (charging cradle) and then connect the AC plug to the AC wall outlet.

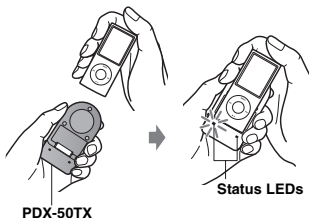


- 2 Remove the transparent film on the pad.



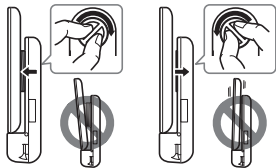
- 3 Connect your iPod or iPhone to PDX-50TX (transmitter).

The green LED lights up if a wireless connection between PDX-50TX and another Yamaha product is established.

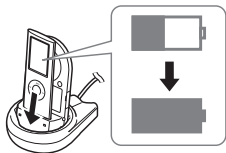


LED	Status
Off	An iPod or iPhone is not connected, or has stopped playing. However, lights up for 30 seconds or 2 minutes (depends on the iPod/iPhone) after connecting or stopping playback.
Flashes green continuously	Connection in progress, please wait.
Flashes green once	Adjusting the volume level.
Lights up green	A connection is established. You are ready to start playback of iPod on another Yamaha product.
Lights up green and flashes red	Flashes red for 2 seconds: An unsupported iPhone or iPod is connected. Keeps flashing red: Connection failed.
Flashes red (regardless of green status)	The battery of the iPod or iPhone is low.

4 Adjust the angle of your iPod or iPhone so that it is aligned parallel to PDX-50TX.



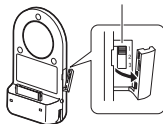
5 To charge the iPod or iPhone, place it on PDX-50BC.



■ Group selection switch

Use this switch to set the group ID. To establish a wireless connection (yAired) with another Yamaha product, set both the products to the same group.

Group selection switch



Match the group selection switch with the group ID to set.



- PDX-50TX supports “1” (A1), “2” (A2), and “3” (A3) on some Yamaha products that support “yAired”.

■ Disconnecting the iPod or iPhone

To disconnect the iPod or iPhone from PDX-50TX (transmitter), pull the iPod or iPhone upward.



- Disconnection may be difficult under low temperature. In this case, do not disconnect the iPod or iPhone by force; loosen off the tab on the back of PDX-50TX to make the disconnection easier.

■ Troubleshooting

Refer to the table below if the unit does not function properly. If the problem you are experiencing is not listed below, or if the instruction below does not help, contact the nearest authorized Yamaha dealer or service center.

Problem	Cause	Remedy
No sound.	PDX-50TX and another Yamaha product are not connected since they are set to different groups.	Set both PDX-50TX and another Yamaha product to the same group.
	The signals are obstructed because there is an obstacle between the transmitting-side product and this unit.	Remove the obstacle.
		Move this unit to another position. If the device is IEEE802.11n-compliant, change the channel setting of the device so as not to affect the unit.
	There is a device (microwave oven, wireless LAN, etc.) outputting signals in 2.4 GHz frequency band nearby.	Move PDX-50TX away from the device.
	The iPod or iPhone is not connected to PDX-50TX firmly.	Connect the iPod or iPhone firmly.
	The firmware of the iPod or iPhone is not updated.	Download the latest iTunes software to update the firmware of the iPod or iPhone. For details, refer to the owner's manual supplied with your iPod or iPhone.
	The signal from PDX-50TX is blocked by your body or metallic objects, etc.	Change the way of holding, orientation, or position of PDX-50TX to avoid the object blocking the signal.
	The battery of iPod or iPhone is low.	Charge the iPod or iPhone.
	The volume is turned down.	Turn up the volume.
	It is in the process of a connection.	Please wait for a while.
The protection circuitry has been activated by excessive volume.	Turn down the volume.	
Controlling volume on the iPod or iPhone does not work.	The iPod or iPhone being used is not supported by this unit.	Use an iPod or iPhone supported by this product.
	The iPod or iPhone is not connected to PDX-50TX firmly.	Connect the iPod or iPhone firmly.

■ Specifications

Supported iPod

..... iPod (5th generation), iPod classic, iPod nano,
iPod touch

Supported iPhone

..... iPhone, iPhone 3G,
iPhone 3GS (as of August 2009)

Power supply AC 120 V, 60 Hz

Power consumption 4 W

Power consumption without connecting

iPod/iPhone less than 1 W

Transmission range

..... Approx. 20 m (66 ft) (without interference)

Maximum playback duration

..... Approx. 10 hours (from full charged iPod)

Dimensions (W x D x H)

PDX-50TX 45.4 x 21.6 x 81 mm
(1-29/32 x 7/8 x 3-7/32 in)

PDX-50BC 56 x 20.5 x 74 mm
(2-7/32 x 13/16 x 2-15/16 in)

Weight

PDX-50TX 29 g (1.02 oz)

PDX-50BC 29.5 g (1.04 oz)

This unit does not support iPod (4th generation or before), iPod without Dock connector, iPod photo and iPod mini.

* Specifications are subject to change without notice

yAired

The “yAired” and “yAired” are trademarks of Yamaha Corporation.

iPod™, iPhone™

iPod is a trademark of Apple Inc., registered in the U.S. and other countries.

iPhone is a trademark of Apple Inc.



“Made for iPod” means that an electronic accessory has been designed to connect specifically to iPod and has been certified by the developer to meet Apple performance standards.

“Works with iPhone” means that an electronic accessory has been designed to connect specifically to iPhone and has been certified by the developer to meet Apple performance standards.

Apple is not responsible for the operation of this device or its compliance with safety and regulatory standards.



Serial No. / No. de série

--